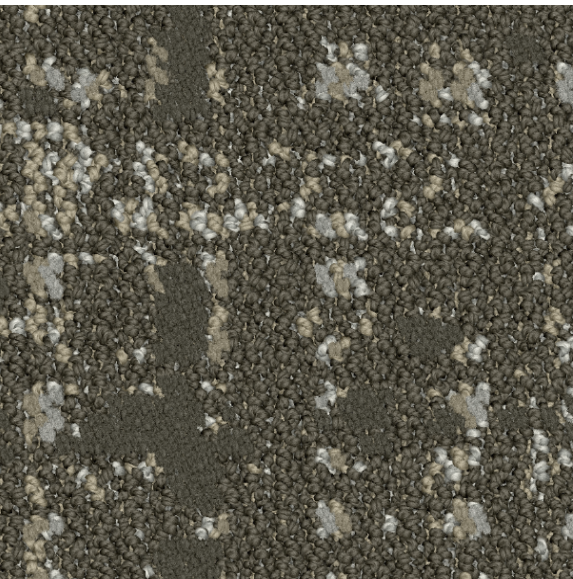


# CHOICE HOTELS Quality



# CHOICE HOTELS

## Quality

- + Approved Styles
- + Lowest Pricing
- + Fast Delivery
- + 10-Year Warranty
- + Broadloom Carpet
- + Lextron Solution-Dyed Nylon



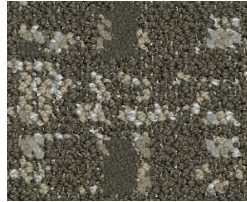
Product Type: Carpet Tile  
 Guestroom  
 Choice Item: CPTB-001  
 Style Number: A0005  
 Color Number: 42714  
 Specs: 21 oz.  
 Carpet Tile Size: 9" x 36" or 24" x 24" Tile



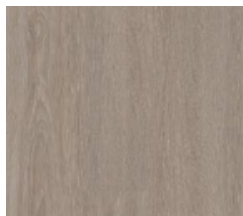
Product Type: LVT  
 Guestroom - All Schemes  
 Choice Item: LVT-001  
 ProGen  
 Style Number: 270265015 Vista Oak  
 Color: Limed Natural  
 Specs: 77" W x 48" L Plank



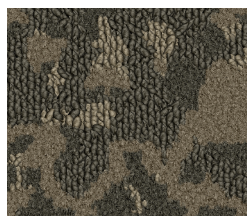
Product Type: Carpet Broadloom  
 Guestroom  
 Choice Item: CP-001  
 Style Number/F' %'  
 Color Number: ' . .  
 Specs: (' oz.  
 EViiZq:GZeZVi: 9%L x +- # ,A



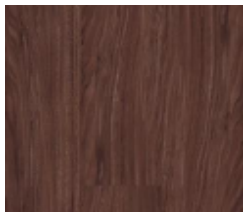
Product Type: Carpet Broadloom  
 Corridor  
 Style Number: D110 (Saltmarsh I)  
 Color Number: 623  
 Specs: 36 oz.  
 Pattern Repeat: 90"W x 100"L



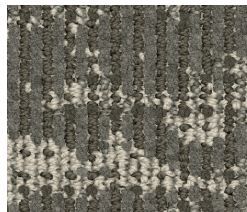
Product Type: LVT  
 Guestroom - All Schemes  
 Choice Item: LVT-001  
 iD Latitude  
 Style Number: PLWD  
 Color: 3606 Chamois Oak  
 Specs: 6" x 48" Plank



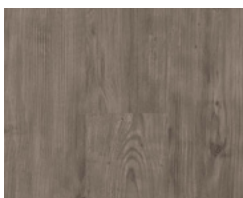
Product Type: Carpet Broadloom  
 Corridor  
 Style Number: 102N (Terra III)  
 Color Number: 424  
 Specs: 42oz.  
 Pattern Repeat: 90"W x 90"L



Product Type: LVT  
 Guestroom - All Schemes  
 Choice Item: LVT-001  
 iD Latitude  
 Style Number: PLWD  
 Color: 3401 Black Walnut  
 Specs: 6" x 48" Plank



Product Type: Carpet Broadloom  
 Corridor  
 Style Number: D1438 (Alchemy I)  
 Color Number: 420  
 Specs: 36oz.  
 Pattern Repeat: 90"W x 180"L



Product Type: LVT  
 Guestroom - All Schemes  
 Choice Item: LVT-001  
 iD Latitude  
 Style Number: PLWD  
 Color: 5136 Acadia Pine  
 Specs: 6" x 48" Plank



Product Type: Resilient Wall Base  
 All Areas  
 Item: RB-001  
 Traditional Rubber Wall Base with Toe  
 Style Number: DC-281  
 Color: 281 Grizzly  
 Specs: 4" H x 1/8" Thick x 120' L

# CHOICE HOTELS

Quality

Carpet Tile / Guestroom



---

Description:	Guestroom
Choice Item:	CPTB-001
Style Number:	A0005 (Loop Stitch) Carpet Tile
Color:	42714 Woven Cane
Carpet Tile Size:	9" x 36" or 224" x 24"
Type:	Tufted Patterned Loop
Content:	TDX Nylon
Weight:	21 oz. tufted face weight
Primary Backing:	Synthetic Non-Woven
Secondary Backing:	Ethos® Modular w/Omnicoat Technology
Pile Height:	0.110" (22.8mm)
Gauge:	1/10"
Dye Method:	Solution Dyed
Installation Method:	Glue-Down
Flame Requirements:	Meets or exceeds requirement Class 1



## Additional Information:

- Carpet should be installed in accordance with the Carpet and Rug Institute's standard CRI-104/CRI-105.
- Pattern streaks and banding are visually apparent streaking in patterned carpet resulting from linear juxtaposition of pattern elements visible in both length and width direction. IT IS NOT A CARPET DEFECT, but is inherent in solution dyed graphic and cut/loop patterns.
- All Specifications subject to normal manufacturing tolerance.

# CHOICE HOTELS

Quality

Broadloom / Guestroom



---

Description:	Guestroom
Choice Item:	CPT-001.3
Style Number:	Q2032 Broadloom
Color:	299
Width:	15'
Construction:	Dynamics - Servo-Scroll Loop Tip Shear
Fiber:	100% Lextron Enviro-Green Solution Dyed Nylon
Tufted Pile Weight:	32 oz. Per Square Yard
Primary Backing:	Woven Polypropylene
Secondary Backing:	Action Bac
Pile Height:	.250" High, .187" Med,, .062" Low
Gauge:	1/10"
Dye Method:	Solution Dyed
Flame Requirements:	Meets or exceeds requirement Class 1

## Additional Information:

- Carpet should be installed in accordance with the Carpet and Rug Institute's standard CRI-104/CRI-105.
- Pattern streaks and banding are visually apparent streaking in patterned carpet resulting from linear juxtaposition of pattern elements visible in both length and width direction. IT IS NOT A CARPET DEFECT, but is inherent in solution dyed graphic and cut/loop patterns.
- All Specifications subject to normal manufacturing tolerance.



# CHOICE HOTELS

Quality

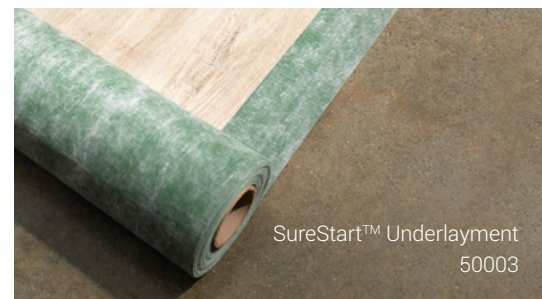
LVT / Guestroom



	<b>Standard</b>	
Choice Item:	LVT-001	RF-01
Classification:	ASTM 1700	Class III, Type B (Solid Vinyl Floor)
Surface Treatment:		Techtonic®
Size:		6" x 48"
Total Thickness:	ASTM F386	0.120" (3.05 mm)
Wear Layer Thickness:	ASTM F410	20 mil (0.51mm)
Installation Method:		Glue-Down
Pattern:		iD Latitude™
Pattern Type:		Wood
Color:		3606 Chamois Oak
Format Type:		Plank
Flexibility:	ASTM F137	Pass
Chemical Resistance:	ASTM F925	Passes
Static Load Limit:	ASTM F970	250 psi, $\leq 0.005"$
Heat Stability:	ASTM F1514	$\Delta E \leq 8.0$
Light Stability:	ASTM F1515	$\Delta E \leq 8.0$
Slip resistance:	ASTM D2047	SCOF $\geq 0.5$
Squareness:	ASTM F2055	Pass
Flammability:	ASTM E648	Class 1 ( $\geq 0.45 W/cm^2$ )
Residual Indentation:	ASTM F1914	Pass
Commercial Warranty:		20-year limited

## **SureStart™ Underlayment 50003**

Product Type	Subflooring
Length	33.30 ft (10.1 m), 44.40 ft (13.5 m)
Total thickness	0.060" (1.5 mm)
Width	3 ft, 4.50 ft
Commercial Warranty	10 year limited light commercial



# CHOICE HOTELS

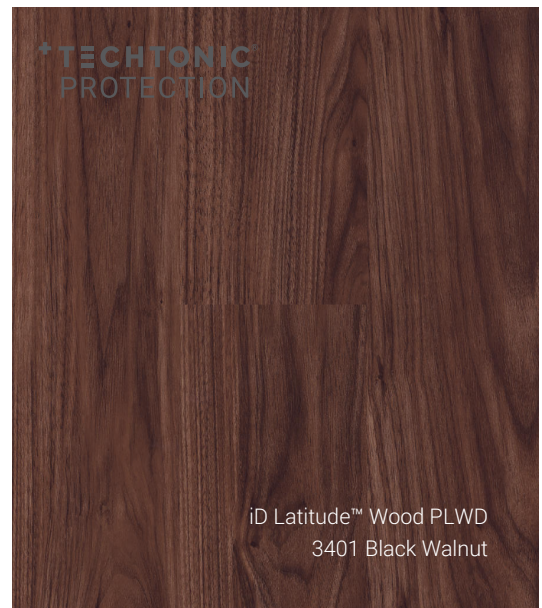
Quality  
LVT / Guestroom



	<b>Standard</b>	
Choice Item:	LVT-001	RF-01
Classification:	ASTM 1700	Class III, Type B (Solid Vinyl Floor)
Surface Treatment:		Tectonic®
Size:		6" x 48"
Total Thickness:	ASTM F386	0.120" (3.05 mm)
Wear Layer Thickness:	ASTM F410	20 mil (0.51mm)
Installation Method:		Glue-Down
Pattern:		iD Latitude™
Pattern Type:		Wood
Color:		3401 Black Walnut
Format Type:		Plank
Flexibility:	ASTM F137	Pass
Chemical Resistance:	ASTM F925	Passes
Static Load Limit:	ASTM F970	250 psi, $\leq 0.005"$
Heat Stability:	ASTM F1514	$\Delta E \leq 8.0$
Light Stability:	ASTM F1515	$\Delta E \leq 8.0$
Slip resistance:	ASTM D2047	SCOF $\geq 0.5$
Squareness:	ASTM F2055	Pass
Flammability:	ASTM E648	Class 1 ( $\geq 0.45 W/cm^2$ )
Residual Indentation:	ASTM F1914	Pass
Commercial Warranty:		20-year limited

## **SureStart™ Underlayment 50003**

Product Type	Subflooring
Length	33.30 ft (10.1 m), 44.40 ft (13.5 m)
Total thickness	0.060" (1.5 mm)
Width	3 ft, 4.50 ft
Commercial Warranty	10 year limited light commercial



iD Latitude™ Wood PLWD  
3401 Black Walnut



SureStart™ Underlayment  
50003

# CHOICE HOTELS

Quality

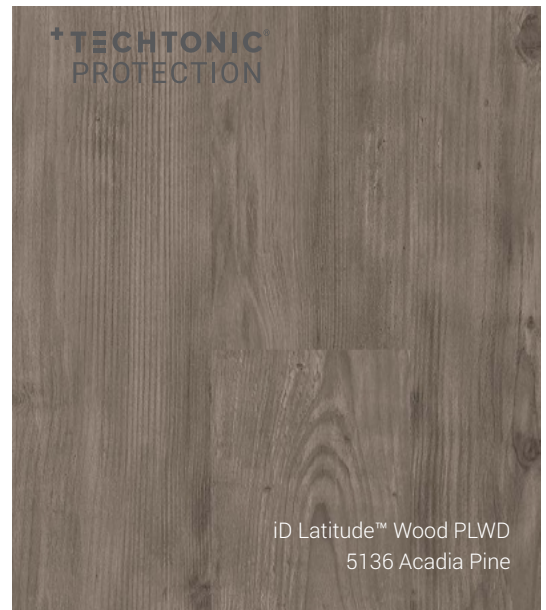
LVT / Guestroom



	<b>Standard</b>	
Choice Item:	LVT-001	RF-01
Classification:	ASTM 1700	Class III, Type B (Solid Vinyl Floor)
Surface Treatment:		Techtonic®
Size:		6" x 48"
Total Thickness:	ASTM F386	0.120" (3.05 mm)
Wear Layer Thickness:	ASTM F410	20 mil (0.51mm)
Installation Method:		Glue-Down
Pattern:		iD Latitude™
Pattern Type:		Wood
Color:		5136 Acadia Pine
Format Type:		Plank
Flexibility:	ASTM F137	Pass
Chemical Resistance:	ASTM F925	Passes
Static Load Limit:	ASTM F970	250 psi, $\leq 0.005"$
Heat Stability:	ASTM F1514	$\Delta E \leq 8.0$
Light Stability:	ASTM F1515	$\Delta E \leq 8.0$
Slip resistance:	ASTM D2047	SCOF $\geq 0.5$
Squareness:	ASTM F2055	Pass
Flammability:	ASTM E648	Class 1 ( $\geq 0.45 \text{ W/cm}^2$ )
Residual Indentation:	ASTM F1914	Pass
Commercial Warranty:		20-year limited

## **SureStart™ Underlayment 50003**

Product Type	Subflooring
Length	33.30 ft (10.1 m), 44.40 ft (13.5 m)
Total thickness	0.060" (1.5 mm)
Width	3 ft, 4.50 ft
Commercial Warranty	10 year limited light commercial



# CHOICE HOTELS

Quality

LVT / Guestroom



---

Choice Item:	LVT-001
Classification:	Class III, Type B (Solid Vinyl Floor)
Size:	7" x 48"
Total Thickness:	0.197" (5 mm)
Wear Layer Thickness:	20 mil (0.51mm)
Accoustical Backing:	0.039" (1mm) IXPE
Installation Method:	Uniclic®
Pattern:	ProGen™
Pattern Type:	Vista Oak
Color:	270265015 Limed Natural
Format Type:	Plank
Edge Treatment:	Microbeveled
Flexibility:	Pass
Chemical Resistance:	Passes
Static Load Limit:	250 psi, $\leq 0.005"$
Heat Stability:	$\Delta E \leq 8.0$
Light Stability:	$\Delta E \leq 8.0$
Slip resistance:	SCOF $\geq 0.5$
Squareness:	Pass
Flammability:	Class 1 ( $\geq 0.45$ W/cm <sup>2</sup> )
Residual Indentation:	Pass
Impact Sound:	$\Delta IIC \geq 21$ dB
IIC Impact Sound	
Reduction Rating:	68
Commercial Warranty:	15-year limited (Light)



# CHOICE HOTELS

## Quality

### Broadloom / Corridor - Opt 1



---

Description:	Corridor
Choice Item:	Opt 1
Style Number:	110D Broadloom (Saltmarsh I)
Color:	623
Width:	15'
Repeat:	90"W x 100"L
Type:	Dynamics - Multi Level Loop Servo Scroll Tip Shear
Content:	Lextron Enviro-Green Solution Dyed Nylon
Weight:	36 oz. tufted face weight
Primary Backing:	Woven Polypropylene
Secondary Backing:	Action Bac
Pile Height:	.250" High, .187" Med, .062" Low
Gauge:	1/10"
Dye Method:	Solution Dyed
Installation Method:	Broadloom
Flame Requirements:	Meets or exceeds requirement Class 1

#### Additional Information:

- Due to the manufacturing process of a tip shear product, the finished yarn weight will vary more than normal manufacturing tolerances and side match cannot be guaranteed.
- Carpet should be installed in accordance with the Carpet and Rug Institute's standard CRI-104. Carpet must be over manufacturer's recommended pad.
- Pattern streaks and banding are visually apparent streaking in patterned carpet resulting from linear juxtaposition of pattern elements visible in both length and width direction. IT IS NOT A CARPET DEFECT, but is inherent in solution dyed graphic and cut/loop patterns.
- All Specifications subject to normal manufacturing tolerance.



# CHOICE HOTELS

Quality

Broadloom / Corridor- Opt 2



---

Description:	Corridor
Choice Item:	Opt 2
Style Number:	102N Broadloom (Terra III)
Color:	424
Width:	15'
Repeat:	90"W x 90"L
Type:	Intrepid - Multi Level Loop Servo Scroll Tip Shear
Content:	100% Lextron Enviro-Green Solution Dyed Nylon
Weight:	42 oz. tufted face weight
Primary Backing:	Woven Polypropylene
Secondary Backing:	Action Bac
Pile Height:	.250" High, .187" Med, .062" Low
Gauge:	1/10"
Dye Method:	Solution Dyed
Installation Method:	Broadloom
Flame Requirements:	Meets or exceeds requirement Class 1

## Additional Information:

- Due to the manufacturing process of a tip shear product, the finished yarn weight will vary more than normal manufacturing tolerances and side match cannot be guaranteed.
- Carpet should be installed in accordance with the Carpet and Rug Institute's standard CRI-104. Carpet must be over manufacturer's recommended pad.
- Pattern streaks and banding are visually apparent streaking in patterned carpet resulting from linear juxtaposition of pattern elements visible in both length and width direction. IT IS NOT A CARPET DEFECT, but is inherent in solution dyed graphic and cut/loop patterns.
- All Specifications subject to normal manufacturing tolerance.



# CHOICE HOTELS

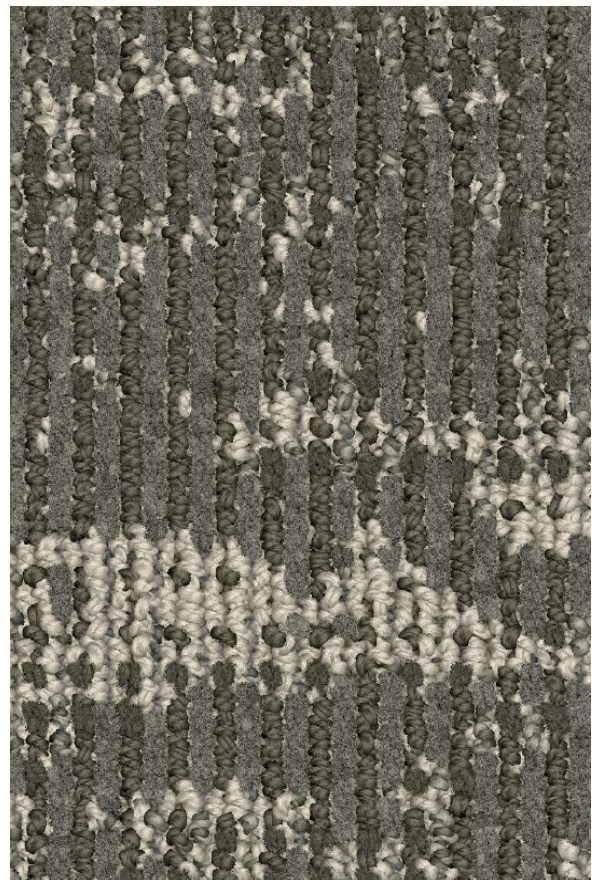
Quality

Broadloom/ Corridor - Opt 3



---

Description:	Corridor
Choice Item:	Opt 3
Style Number:	D1438 Broadloom (Alchemy I)
Color:	420
Width:	15'
Repeat:	90"W x 180"L
Type:	Dynamics - Multi Level Loop Servo Scroll Tip Shear
Content:	100% Lextron Enviro-Green Solution Dyed Nylon
Weight:	36 oz. tufted face weight
Primary Backing:	Woven Polypropylene
Secondary Backing:	Action Bac
Pile Height:	.250" High, .187" Med, .062" Low
Gauge:	1/10"
Dye Method:	Solution Dyed
Installation Method:	Broadloom
Flame Requirements:	Meets or exceeds requirement Class 1



## Additional Information:

- Due to the manufacturing process of a tip shear product, the finished yarn weight will vary more than normal manufacturing tolerances and side match cannot be guaranteed.
- Carpet should be installed in accordance with the Carpet and Rug Institute's standard CRI-104. Carpet must be over manufacturer's recommended pad.
- Pattern streaks and banding are visually apparent streaking in patterned carpet resulting from linear juxtaposition of pattern elements visible in both length and width direction. IT IS NOT A CARPET DEFECT, but is inherent in solution dyed graphic and cut/loop patterns.
- All Specifications subject to normal manufacturing tolerance.

