

FLOORING STANDARDS

# Hyatt Place

## Series 300 | 260 GR | 260 PS

ACCOUNT MANAGER

**Kristin Mayle Hasson**

[kristin.mayle@shawcontract.com](mailto:kristin.mayle@shawcontract.com)

312.519.9292

CUSTOMER SERVICE

**Ingrid Munson**

[ingrid.munson@shawcontract.com](mailto:ingrid.munson@shawcontract.com)

312.533.9514

VP STRATEGIC ACCOUNTS

**Desiree Perkins**

[desiree.perkins@shawcontract.com](mailto:desiree.perkins@shawcontract.com)

404.452.3055



**ShawContract**<sup>®</sup>  
hospitality



## Our Sustainability Story

Everyone should have access to sustainable products for the places where we heal, learn, rest and work. Our brand vision, Smarter Impact, is our call to action to share insights and solutions that help you act on your power for positive change, especially when it comes to making sustainable choices.

Our view of sustainability encompasses not only the environmental health of our products and our operations, but also how our products impact human experience. For more than 20 years, Shaw Contract Hospitality has demonstrated our commitment to the Cradle to Cradle® design philosophy and the Cradle to Cradle Certified™ Products Program. More than 90% of the products we manufacture have achieved this prestigious multi-attribute certification, protecting humans and the environment.



Declare.

EPD®



## Attributes

- Guest comfort and experience
- High-traffic durability
- Housekeeping support and cleanliness
- Improved acoustics
- Reduced renovation downtime
- Welcoming, customized design

## Why Shaw Contract Hospitality?

- By selecting materials that are sustainably sourced, long-lasting and free of harmful chemicals, hotels can assure guests that their values matter. Shaw Contract Hospitality offers a portfolio of products that satisfy the most stringent sustainability certifications.
- An entire team dedicated to customizing your hospitality project, including design services, visualization, estimating, and install seaming diagrams
- Single point of contact for order entry/monitoring, shipment tracking and expediting, technical services, risk mitigation and problem resolution
- Tailored stocking program based on your forecasting to ensure availability of your standard products and rapid service/reduced lead times

## Product Breadth

- Area Rugs
- Broadloom
- Carpet Tile
- Hardwood
- LVT
- Sheet
- Bio-based Resilient
- COREtec® Resilient
- Accessories



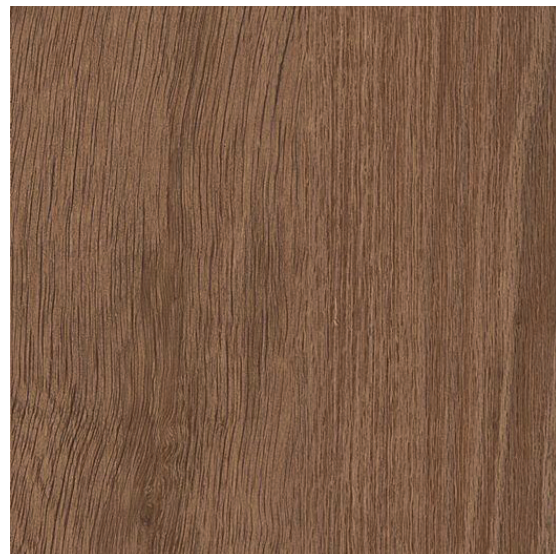
Series 300 | 260 GR | 260 PS



Guestroom | HPG-72-1-TL (LVT-01G)

<b>Style</b>	BS816
<b>Color</b>	03004
<b>Product Type</b>	COREtec®
<b>Construction</b>	Multilayer WPC with Attached Cork Underlayment
<b>Wear Layer Thickness</b>	20 mil   0.02 in   0.51 mm
<b>Overall Thickness</b>	0.315 in   8.0 mm
<b>Nominal Dimensions</b>	7 in x 48 in   18 cm x 122 cm
<b>Actual Dimensions</b>	7.13 in x 48.03 in   18.11 cm x 122 cm
<b>Installation</b>	Floating
<b>Approved Install Method</b>	Stagger
<b>Area Per Box</b>	38.03 sq ft   16 pcs per box*
<b>Warranty</b>	15 Year Commercial Limited

\*Must purchase in full box quantities.



For sample, order BS816 color 03004.

Series 300 | 260 GR | 260 PS



Guestroom | HPG-72-1-TL (LVT-01G)

<b>Style</b>	BS785
<b>Color</b>	00615
<b>Product Type</b>	COREtec®
<b>Construction</b>	Multilayer WPC with Attached Cork Underlayment
<b>Wear Layer Thickness</b>	20 mil   0.02 in   0.51 mm
<b>Overall Thickness</b>	0.315 in   8.0 mm
<b>Nominal Dimensions</b>	7 in x 48 in   18 cm x 122 cm
<b>Actual Dimensions</b>	7.13 in x 48.03 in   18.11 cm x 122 cm
<b>Installation</b>	Floating
<b>Approved Install Method</b>	Stagger
<b>Area Per Box</b>	38.03 sq ft   16 pcs per box*
<b>Warranty</b>	15 Year Commercial Limited

\*Must purchase in full box quantities.



For sample, order BS785 color 00615.

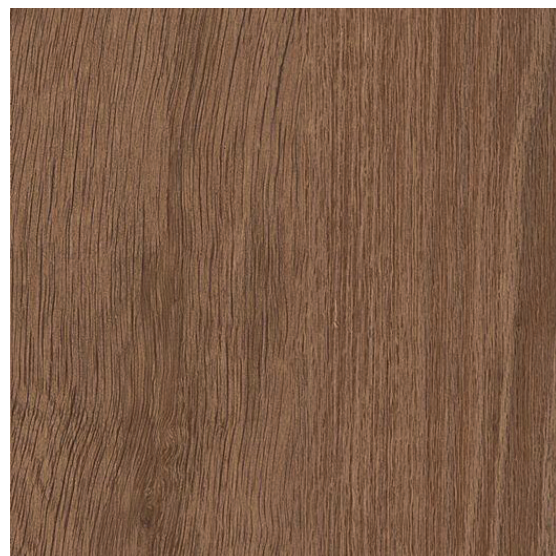
Series 300 | 260 GR | 260 PS



Guestroom | HPG-72-1-TL (LVT-01G)

<b>Style</b>	BS851
<b>Color</b>	03004
<b>Product Type</b>	COREtec®
<b>Construction</b>	Multilayer SPC with Attached Cork Underlayment
<b>Wear Layer Thickness</b>	20 mil   0.02 in   0.51 mm
<b>Overall Thickness</b>	0.197 in   5.0 mm
<b>Nominal Dimensions</b>	7 in x 48 in   18 cm x 122 cm
<b>Actual Dimensions</b>	7.20 in x 48.03 in   18.29 cm x 122 cm
<b>Installation</b>	Floating
<b>Approved Install Method</b>	Stagger
<b>Area Per Box</b>	28.84 sq ft   12 pcs per box*
<b>Warranty</b>	15 Year Commercial Limited

\*Must purchase in full box quantities.



For sample, order BS851 color 03004.

Series 300 | 260 GR | 260 PS



Guestroom | HPG-72-1-TL (LVT-01G)

<b>Style</b>	BS850
<b>Color</b>	00615
<b>Product Type</b>	COREtec®
<b>Construction</b>	Multilayer SPC with Attached Cork Underlayment
<b>Wear Layer Thickness</b>	20 mil   0.02 in   0.51 mm
<b>Overall Thickness</b>	0.197 in   5.0 mm
<b>Nominal Dimensions</b>	7 in x 48 in   18 cm x 122 cm
<b>Actual Dimensions</b>	7.20 in x 48.03 in   18.29 cm x 122 cm
<b>Installation</b>	Floating
<b>Approved Install Method</b>	Stagger
<b>Area Per Box</b>	28.84 sq ft   12 pcs per box*
<b>Warranty</b>	15 Year Commercial Limited

\*Must purchase in full box quantities.

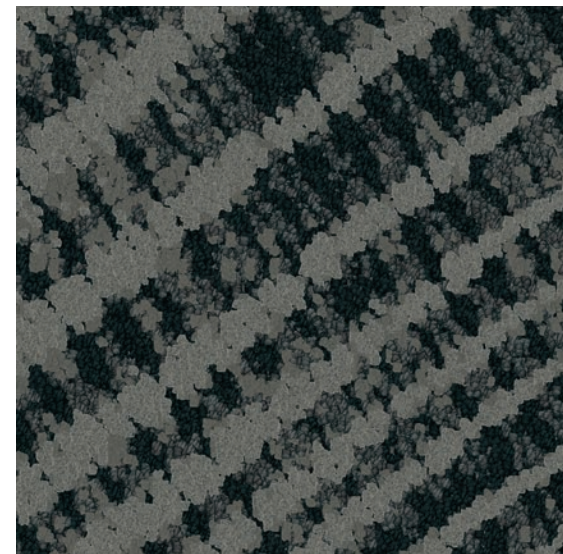


For sample, order BS850 color 00615.



### Meeting Room | HPP-22-1-CPT (CPT-04)

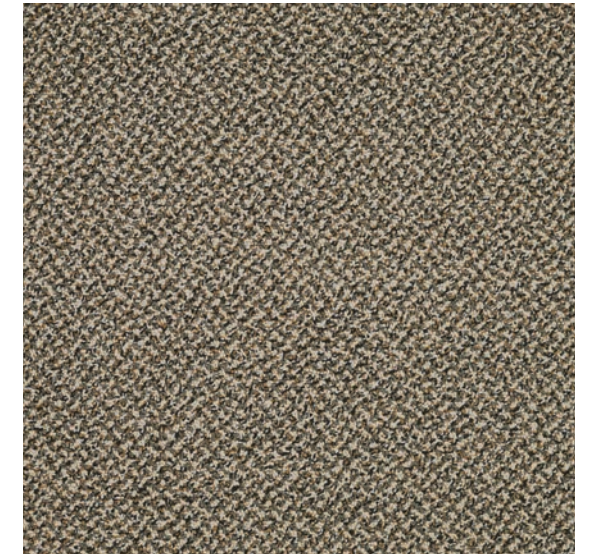
Style	BS093
Color	35585
Product Type	Carpet Tile
Fiber	Eco Solution Q® Nylon
Dye Method	100% Solution Dyed
Construction	Multi-Level Pattern Cut/Loop
Tufted Weight	26.0 oz/yd <sup>2</sup>   881.6 g/m <sup>2</sup>
Gauge	1/10 in   39.4 per 10 cm
Stitches	8 per in   33 per 10 cm
Size	9 in x 36 in   22.9 cm x 91.4 cm
Backing	Ecologix® (Attached Cushion)
Installation	Direct Glue
Approved Install Method	Ashlar
Warranty	Lifetime Commercial Limited



For sample, order BS093 color 35585.

### Back of House | HPP-20-2-CPT (CPT-05)

Style	BS096
Color	11760
Product Type	Broadloom
Fiber	Eco Solution Q® Nylon
Dye Method	100% Solution Dyed
Construction	Pattern Loop
Tufted Weight	26.0 oz/yd <sup>2</sup>   881.6 g/m <sup>2</sup>
Gauge	1/10 in   39.4 per 10 cm
Stitches	10 per in   41 per 10 cm
Size	12 ft   3.66 m
Pattern Repeat	0.30 in w x 1.50 in l   0.762 mm w x 3.81 cm l
Backing	Classicbac®
Installation	Direct Glue
Warranty	10 Year Commercial Limited



For sample, order BS096 color 11760.

### Elevator | HPPR-70-1-TL

Style	BS558
Color	07067
Product Type	COREtec®
Construction	Multilayer SPC
Wear Layer Thickness	20 mil   0.02 in   0.51 mm
Overall Thickness	0.157 in   4.0 mm
Nominal Dimensions	7 in x 48 in   18 cm x 122 cm
Actual Dimensions	7.00 in x 48.00 in   17.78 cm x 121.92 cm
Installation	Direct Glue
Approved Install Method	Stagger
Area Per Box	27.96 sq ft   12 pcs per box*
Warranty	15 Year Commercial Limited



For sample, order BS558 color 07067.



